

## 10-12 View Point Road Inspection 27/02/2025

- Dave request entry to the dwelling for following reasons: inspect Fridge and Dilapidation Report
- Consent given by Bronwyn
- Fridge appears to be clean and neat

## PICTURES



Figure { SEQ Figure \\* ARABIC } Ground Floor Bedroom



Figure 2 Kitchen



Figure 3 Linen Cupboard

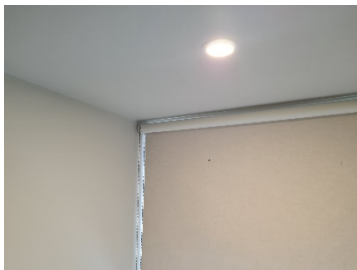


Figure 4 East Bedroom P1

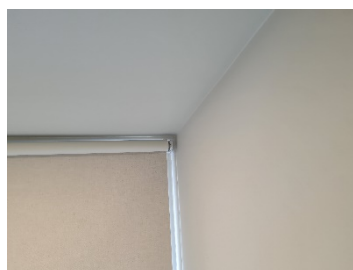


Figure 5 East Bedroom P2

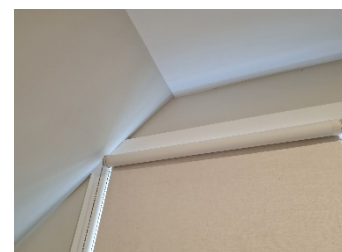


Figure 6 East Bedroom 3



Figure 7 East Bedroom 4



Figure 8 East Bedroom 5



Figure 9 East Bedroom 6

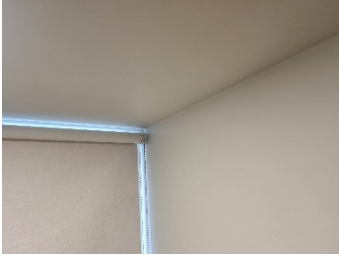


Figure 10 East Bedroom 7



Figure 11 East bedroom 8



Figure 12 East Bedroom 9



Figure 13 East Bedroom 10

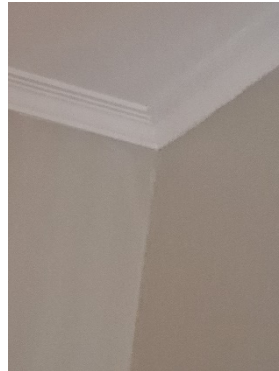


Figure 14 Front Landing 1

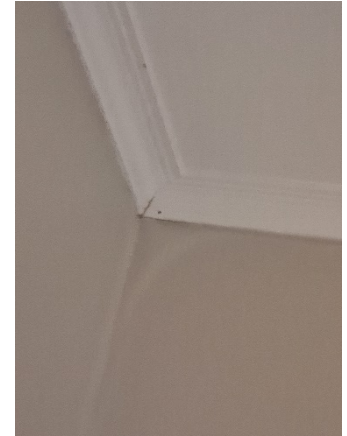


Figure 15 Front Landing 2



Figure 16 Hall outside ground floor bedroom



Figure 17 Hall outside ground floor bedroom

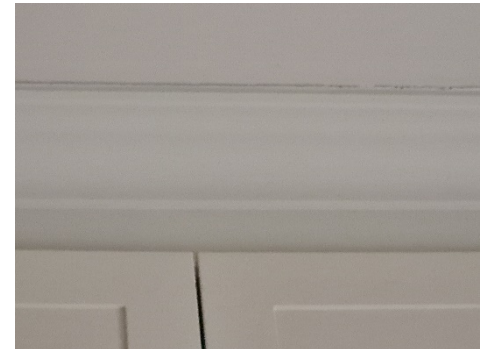


Figure 18 Front landing 3

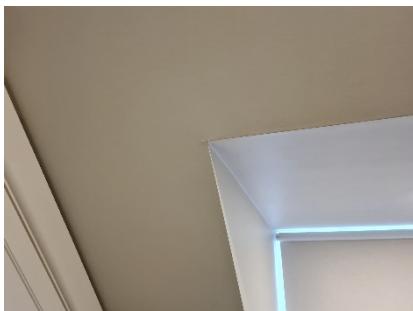


Figure 19 Master Bedroom 1

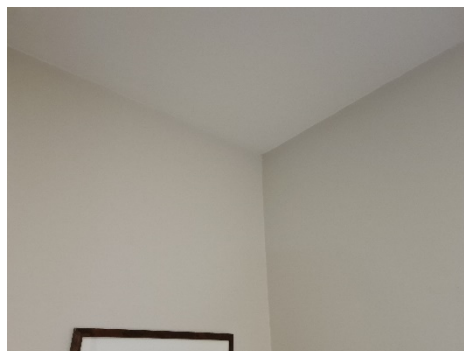


Figure 20 Master Bedroom 2

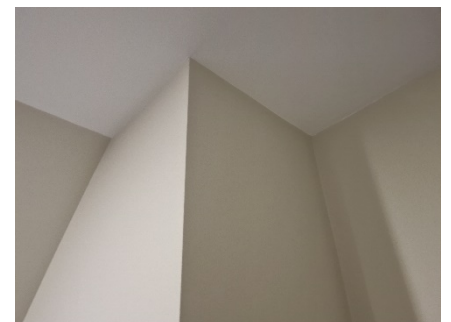


Figure { SEQ Figure \\* ARABIC }1 Master Bedroom 3





















Figure 2{ SEQ Figure \\* ARABIC } Master Bedroom 5



Figure 2{ SEQ Figure \\* ARABIC } Master Bedroom 6

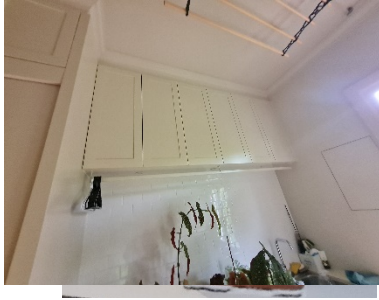


Figure 3{ SEQ Figure \\* ARABIC } - Laundry



Figure 38 Under the House



Figure 39 Under the house



Figure { SEQ Figure \\* ARABIC } wall under the house that has been dug out

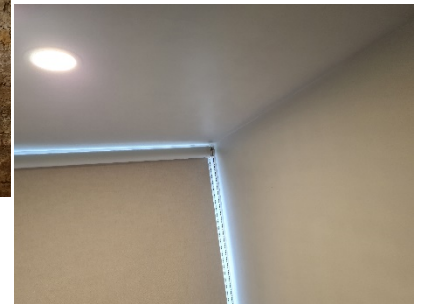


Figure 28 North Bedroom 1

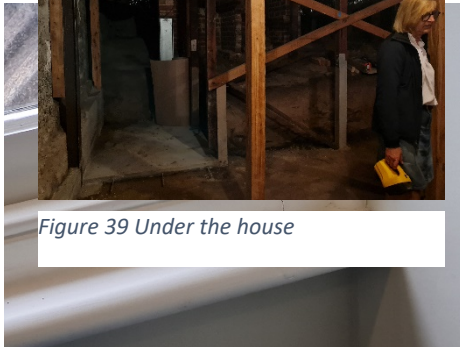


Figure 2{ SEQ Figure \\* ARABIC } Master bedroom 7

Figure 27 Master Bedroom 8



Figure 30 Cellar



Figure 31 Kitchen

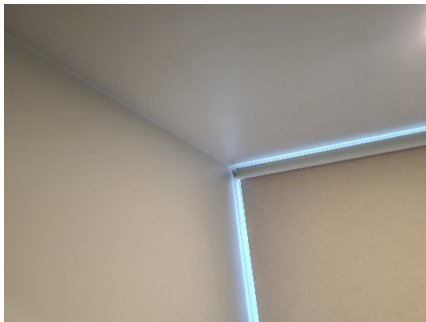


Figure 29 North Bedroom 2



Figure 33 Kitchen 2



Figure 34 Kitchen 3

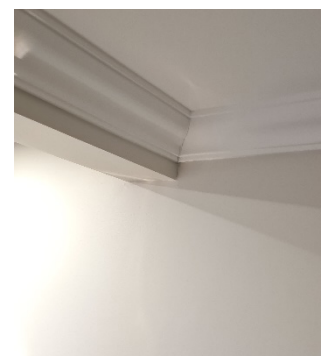


Figure 35 Bar

Unreinforced stone wall under house

- Lots of soil removed, orange line shows crack and where the outside soil line is.

Garage – has “\$21,000” worth of items missing. Only power tools in there are an old DeWalt drill and a soldering iron.

Gerry requests to come back to do an internet upgrade to improve cameras

Dave inquires about 2022 slide irrigation

- Old pipes only on the top section
- Old septic system could possibly be transporting water down the escarpment (Not decommissioned correctly)