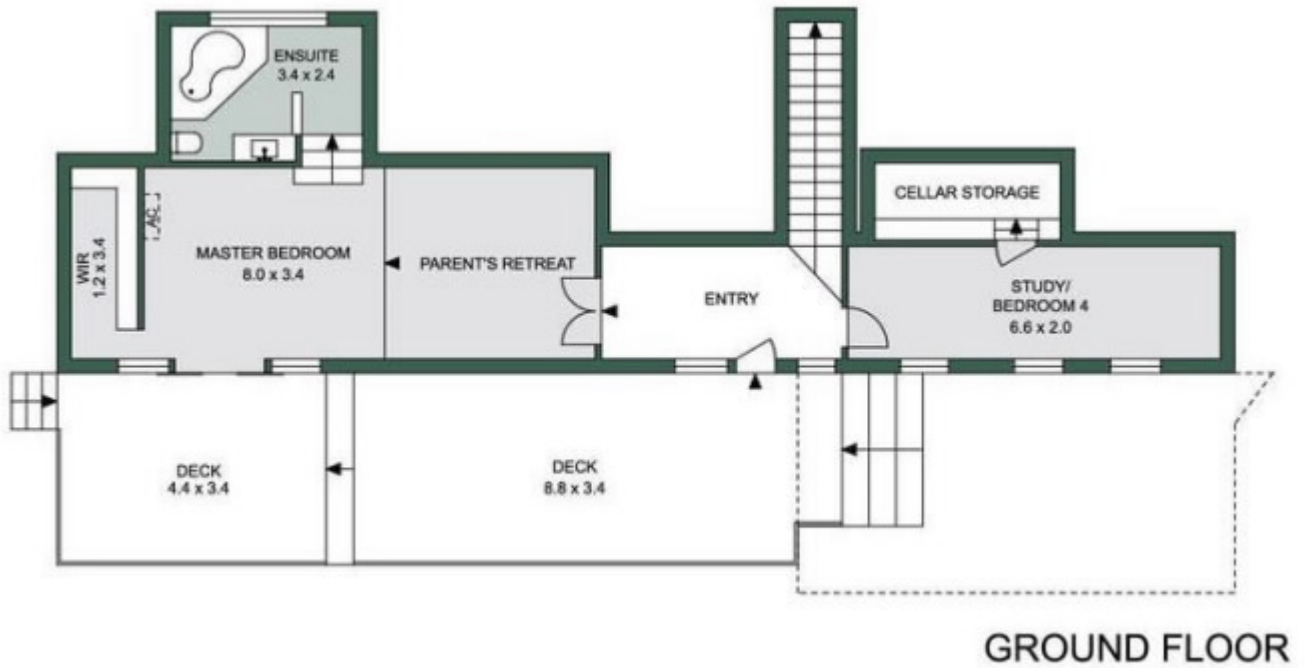
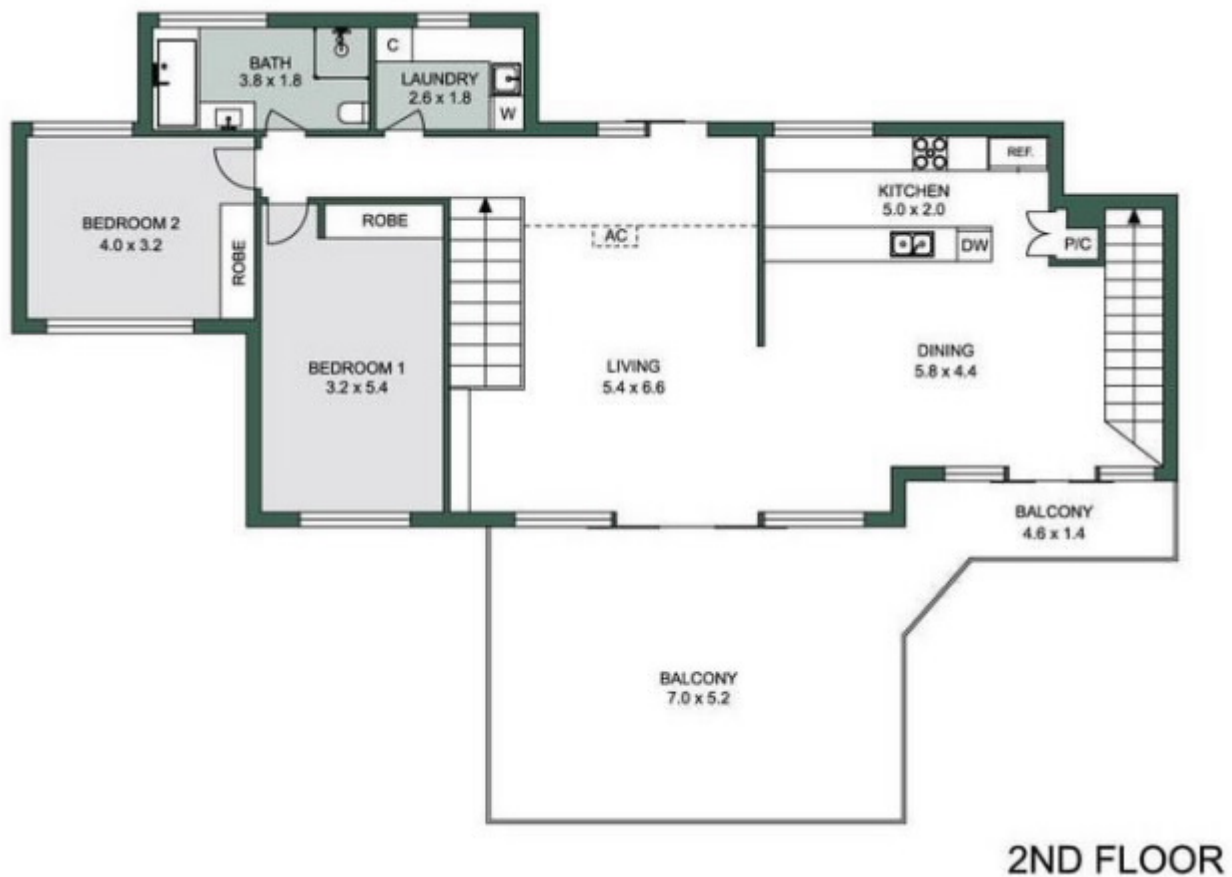


### Floorplan 3 Penny Lane, McCrae



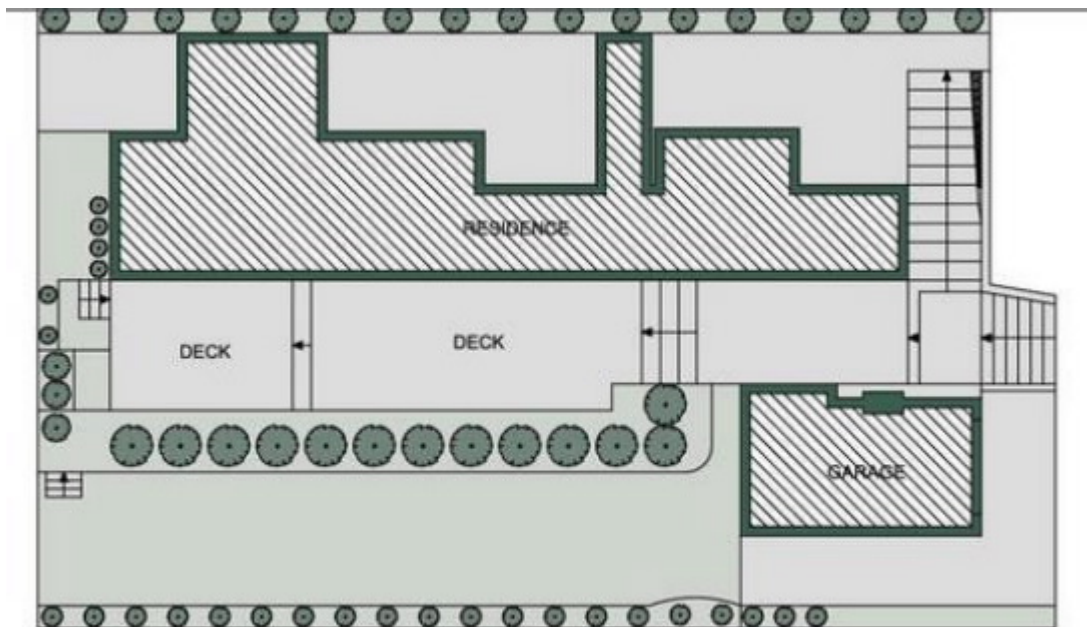
Jan 5 2025 – First landslide approx 7:40pm, impact to property at Laundry and Bathroom.

Access to bedrooms 1 & 2 cut off . Water flows into living room (2<sup>nd</sup> Floor), and then down the stairs (ground floor) into entryway and study/bedroom 4.





3RD FLOOR



SITE PLAN