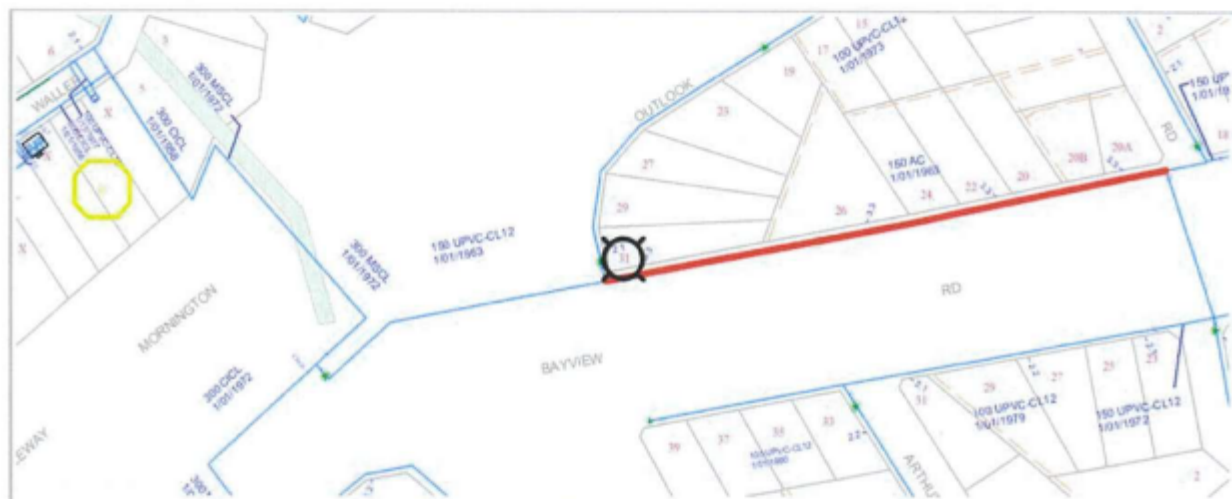


Date of issue	27/03/2025	Property	Lot 54, 31, OUTLOOK ROAD, MCCRAE, 3938							Top water level (m) 141.6		
Date of expiration	27/03/2026	Tapping main	AC (150mm)							Assumed elevation (m) 77		
95th percentile fire flow information												
Flow (L/s)	0	10	15	20	25	30	35	40	50	60	75	100
Residual Pressure (m)	58	54	52	49	46	42	38	X	X	X	X	X



Information obtained from South East Water's pressure and flow information service is based on a modelled water supply system. This modelling is based on South East Water's existing assets and historical demand, and does not consider the impact of large commercial or industrial customers or changing demand over time. The impact of large scale commercial or industrial sites, or nearby development activity, on the operation and performance of fire services should be assessed on an ongoing basis.

Pressure and flow information provided by South East Water is therefore not a guarantee of actual asset performance in the field, and water supply pressure and network capacity may vary from the information provided. South East Water does not make any representation or warranty as to the accuracy, completeness, adequacy or currency of the pressure and flow information provided. To the extent permitted by law, South East Water and its employees, officers, agents and contractors are not liable to you or anyone else for any loss or damage (including without limitation, indirect, special or consequential loss or damage) in connection with use of, or reliance on, the pressure and flow information. To the extent that South East Water is prohibited at law from excluding its liability, South East Water limits its liability to the resupply of the pressure and flow information.

Pressure and flow information should always be validated through a site-specific field-based testing programme carried out by a suitably qualified and experienced consultant. Any bursts or leaks or any site-specific field-based testing programme which finds a lower pressure than the pressure and flow information provided should be escalated to South East Water (Faults and Emergencies on 132 812).