

Prepared for Mornington Peninsula Shire  
 Asset ID NP12212117  
 Location Prospect Hill Road, 7 McCrae  
 Date 30/08/2023  
 Operator Craig Hunt



Upstream Node 929094  
 Downstream Node 962658  
 Survey Direction Upstream  
 Inspected Length 34.88 meters  
 Camera Type Tractor  
 Standard WSA 05-2008 2.2

Conduit Shape Circular  
 Material RC  
 Size 300



	Peak	Mean	Total	Average	Grade
Structural	0	0	0	0	1
Service	0	0	0	0	1

1

Structural Grade  
 Sound physical condition, insignificant deterioration.

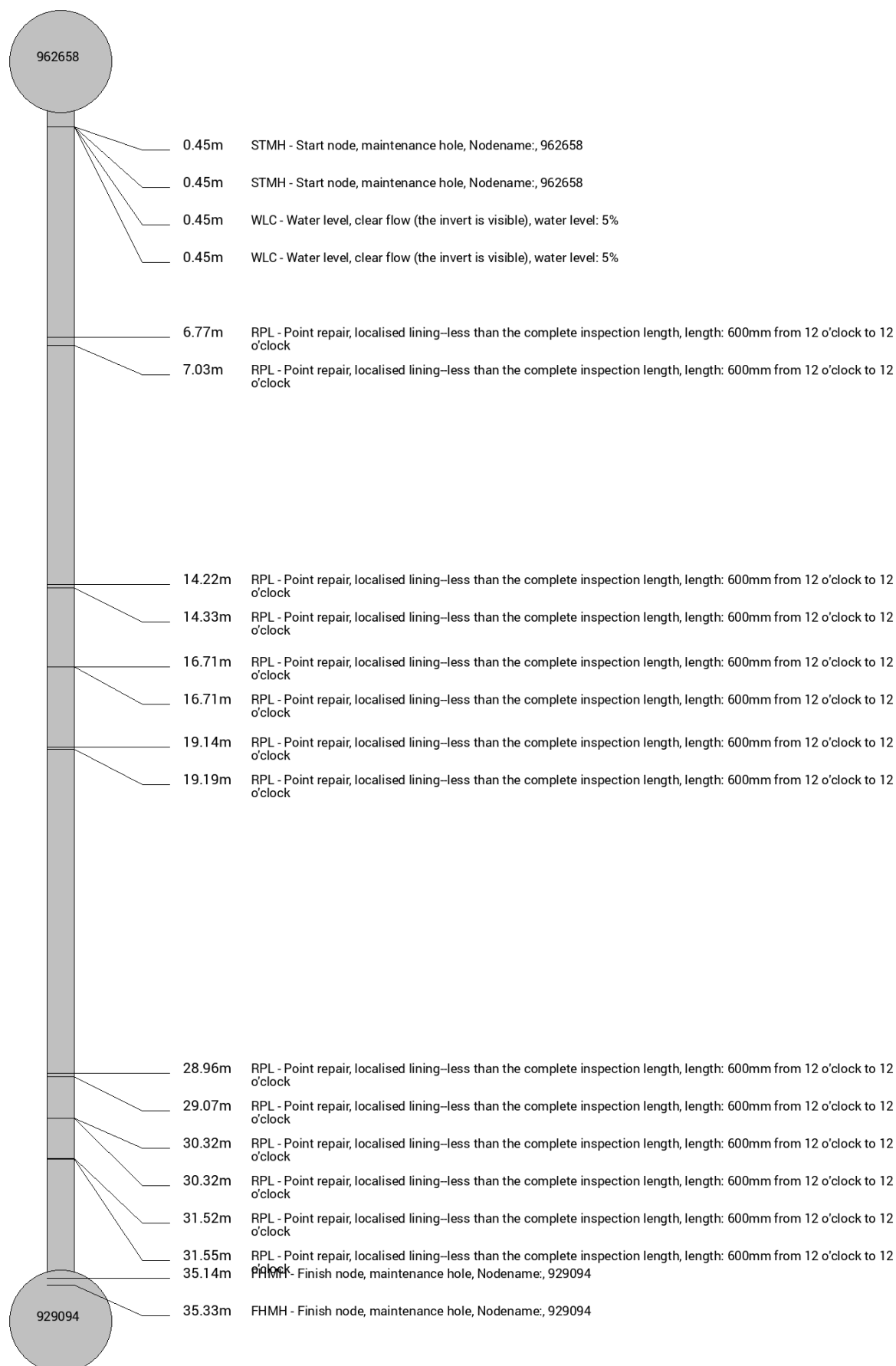
1

Service Grade  
 Sound physical condition, insignificant deterioration.



Information in this report is intended as a guide only and represents the operators best judgement on the day of survey. Whilst all care has been taken to provide an accurate report, the asset owner is advised to review video footage and defect photographs rather than rely solely on calculated scores and conditions.

For further information regarding observations and scores please refer to the Water Services Association of Australia (WSAA) website ([www.wsaa.asn.au](http://www.wsaa.asn.au))



# No Photo

Photograph not taken by operator

Location of Observation: 0.45m Video Position: 00:00:00

Observation Code: STMH

Start node, maintenance hole, Nodename:, 962658



Location of Observation: 0.45m

Video Position: 00:00:00

Observation Code: STMH

Start node, maintenance hole, Nodename:, 962658



Location of Observation: 0.45m Video Position: 00:00:00

Observation Code: STMH[PHOTO 2]

Start node, maintenance hole, Nodename:, 962658



Location of Observation: 0.45m

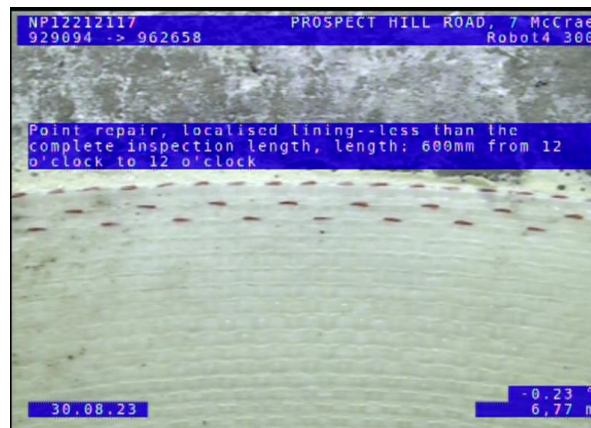
Video Position: 00:00:17

Observation Code: WLC

Water level, clear flow (the invert is visible), water level: 5%



Location of Observation: 0.45m      Video Position: 00:00:17  
 Observation Code: WLC  
 Water level, clear flow (the invert is visible), water level: 5%



Location of Observation: 6.77m      Video Position: 00:00:45  
 Observation Code: RPL  
 Point repair, localised lining--less than the complete inspection length, length: 600mm from 12 o'clock to 12 o'clock



Location of Observation: 6.77m      Video Position: 00:00:45  
 Observation Code: RPL[PHOTO 2]  
 Point repair, localised lining--less than the complete inspection length, length: 600mm from 12 o'clock to 12 o'clock



Location of Observation: 7.03m      Video Position: 00:00:49  
 Observation Code: RPL  
 Point repair, localised lining--less than the complete inspection length, length: 600mm from 12 o'clock to 12 o'clock

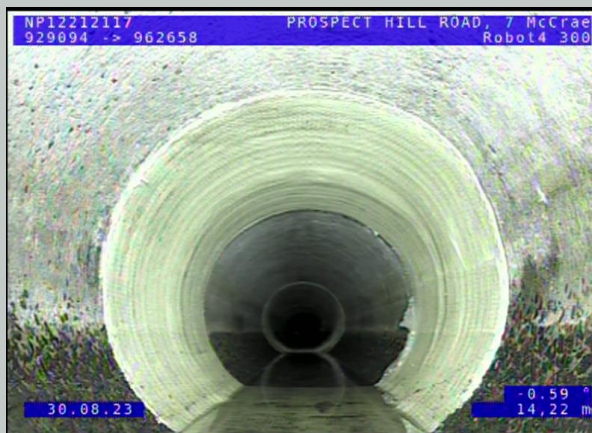




Location of Observation: 7.03m      Video Position: 00:00:49  
 Observation Code: RPL[PHOTO 2]  
 Point repair, localised lining--less than the complete inspection length, length: 600mm from 12 o'clock to 12 o'clock



Location of Observation: 14.22m      Video Position: 00:01:47  
 Observation Code: RPL  
 Point repair, localised lining--less than the complete inspection length, length: 600mm from 12 o'clock to 12 o'clock



Location of Observation: 14.22m      Video Position: 00:01:47  
 Observation Code: RPL[PHOTO 2]  
 Point repair, localised lining--less than the complete inspection length, length: 600mm from 12 o'clock to 12 o'clock



Location of Observation: 14.33m      Video Position: 00:01:34  
 Observation Code: RPL  
 Point repair, localised lining--less than the complete inspection length, length: 600mm from 12 o'clock to 12 o'clock



Location of Observation: 14.33m      Video Position: 00:01:34  
 Observation Code: RPL[PHOTO 2]  
 Point repair, localised lining--less than the complete inspection length, length: 600mm from 12 o'clock to 12 o'clock



Location of Observation: 16.71m      Video Position: 00:02:33  
 Observation Code: RPL  
 Point repair, localised lining--less than the complete inspection length, length: 600mm from 12 o'clock to 12 o'clock



Location of Observation: 16.71m      Video Position: 00:02:33  
 Observation Code: RPL[PHOTO 2]  
 Point repair, localised lining--less than the complete inspection length, length: 600mm from 12 o'clock to 12 o'clock



Location of Observation: 16.71m      Video Position: 00:02:05  
 Observation Code: RPL  
 Point repair, localised lining--less than the complete inspection length, length: 600mm from 12 o'clock to 12 o'clock





Location of Observation: 16.71m Video Position: 00:02:05

Observation Code: RPL[PHOTO 2]

Point repair, localised lining--less than the complete inspection length, length: 600mm from 12 o'clock to 12 o'clock



Location of Observation: 19.14m Video Position: 00:03:09

Observation Code: RPL

Point repair, localised lining--less than the complete inspection length, length: 600mm from 12 o'clock to 12 o'clock



Location of Observation: 19.14m Video Position: 00:03:09

Observation Code: RPL[PHOTO 2]

Point repair, localised lining--less than the complete inspection length, length: 600mm from 12 o'clock to 12 o'clock



Location of Observation: 19.19m Video Position: 00:02:36

Observation Code: RPL

Point repair, localised lining--less than the complete inspection length, length: 600mm from 12 o'clock to 12 o'clock



Location of Observation: 19.19m Video Position: 00:02:36

Observation Code: RPL[PHOTO 2]

Point repair, localised lining--less than the complete inspection length, length: 600mm from 12 o'clock to 12 o'clock



Location of Observation: 28.96m Video Position: 00:04:07

Observation Code: RPL

Point repair, localised lining--less than the complete inspection length, length: 600mm from 12 o'clock to 12 o'clock



Location of Observation: 28.96m Video Position: 00:04:07

Observation Code: RPL[PHOTO 2]

Point repair, localised lining--less than the complete inspection length, length: 600mm from 12 o'clock to 12 o'clock



Location of Observation: 29.07m Video Position: 00:03:35

Observation Code: RPL

Point repair, localised lining--less than the complete inspection length, length: 600mm from 12 o'clock to 12 o'clock





Location of Observation: 29.07m      Video Position: 00:03:35  
 Observation Code: RPL[PHOTO 2]  
 Point repair, localised lining--less than the complete inspection length, length: 600mm from 12 o'clock to 12 o'clock



Location of Observation: 30.32m      Video Position: 00:04:00  
 Observation Code: RPL  
 Point repair, localised lining--less than the complete inspection length, length: 600mm from 12 o'clock to 12 o'clock



Location of Observation: 30.32m      Video Position: 00:04:00  
 Observation Code: RPL[PHOTO 2]  
 Point repair, localised lining--less than the complete inspection length, length: 600mm from 12 o'clock to 12 o'clock



Location of Observation: 30.32m      Video Position: 00:04:43  
 Observation Code: RPL  
 Point repair, localised lining--less than the complete inspection length, length: 600mm from 12 o'clock to 12 o'clock



Location of Observation: 30.32m Video Position: 00:04:43

Observation Code: RPL[PHOTO 2]

Point repair, localised lining--less than the complete inspection length, length: 600mm from 12 o'clock to 12 o'clock



Location of Observation: 31.52m Video Position: 00:05:16

Observation Code: RPL

Point repair, localised lining--less than the complete inspection length, length: 600mm from 12 o'clock to 12 o'clock



Location of Observation: 31.52m Video Position: 00:05:16

Observation Code: RPL[PHOTO 2]

Point repair, localised lining--less than the complete inspection length, length: 600mm from 12 o'clock to 12 o'clock

# No Photo

Photograph not taken by operator

Location of Observation: 31.55m Video Position: 00:04:22

Observation Code: RPL

Point repair, localised lining--less than the complete inspection length, length: 600mm from 12 o'clock to 12 o'clock

# No Photo

Photograph not taken by operator

Location of Observation: 35.14m      Video Position: 00:04:56

Observation Code: FHMH

Finish node, maintenance hole, Nodename:, 929094



Location of Observation: 35.33m      Video Position: 00:05:59

Observation Code: FHMH

Finish node, maintenance hole, Nodename:, 929094