

Prepared for Mornington Peninsula Shire
 Asset ID NP12212117
 Location Prospect Hill Road, 7 McCrae
 Date 30/08/2023
 Operator Craig Hunt



Upstream Node 929094
 Downstream Node 962658
 Survey Direction Upstream
 Inspected Length 34.88 meters
 Camera Type Tractor
 Standard WSA 05-2008 2.2

Conduit Shape Circular
 Material RC
 Size 300



	Peak	Mean	Total	Average	Grade
Structural	0	0	0	0	1
Service	0	0	0	0	1

1

Structural Grade
 Sound physical condition, insignificant deterioration.

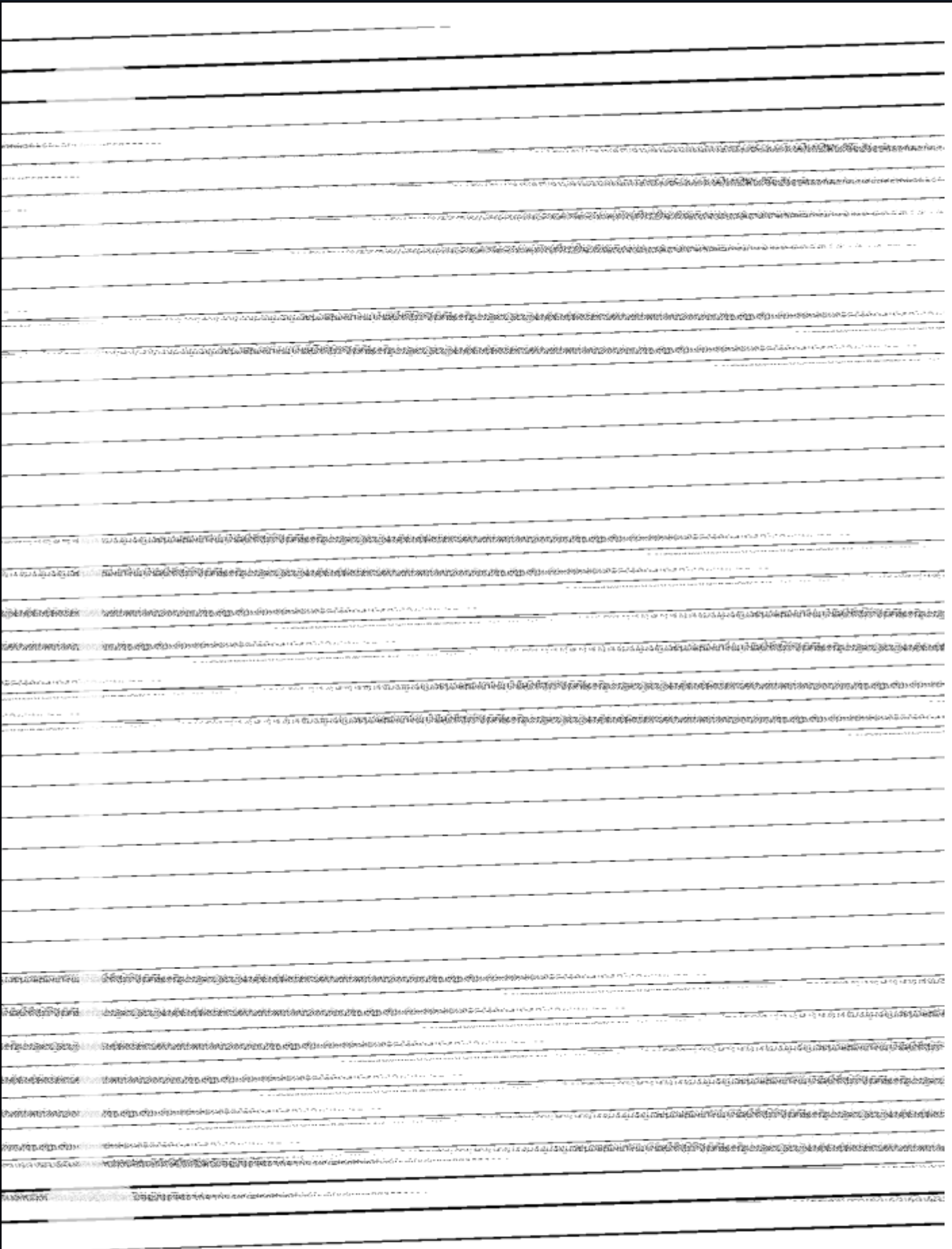
1

Service Grade
 Sound physical condition, insignificant deterioration.



Information in this report is intended as a guide only and represents the operators best judgement on the day of survey. Whilst all care has been taken to provide an accurate report, the asset owner is advised to review video footage and defect photographs rather than rely solely on calculated scores and conditions.

For further information regarding observations and scores please refer to the Water Services Association of Australia (WSAA) website (www.wsaa.asn.au)



No Photo

Photograph not taken by operator

Location of Observation: 0.45m Video Position: 00:00:00

Observation Code: STMH

Start node, maintenance hole, Nodename:, 962658

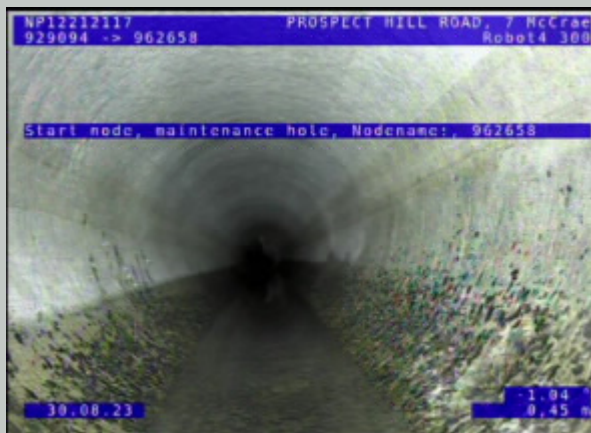


Location of Observation: 0.45m

Video Position: 00:00:00

Observation Code: STMH

Start node, maintenance hole, Nodename:, 962658



Location of Observation: 0.45m Video Position: 00:00:00

Observation Code: STMH[PHOTO 2]

Start node, maintenance hole, Nodename:, 962658

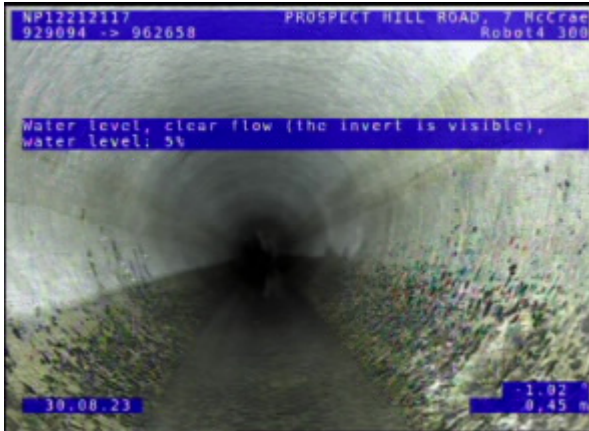


Location of Observation: 0.45m

Video Position: 00:00:17

Observation Code: WLC

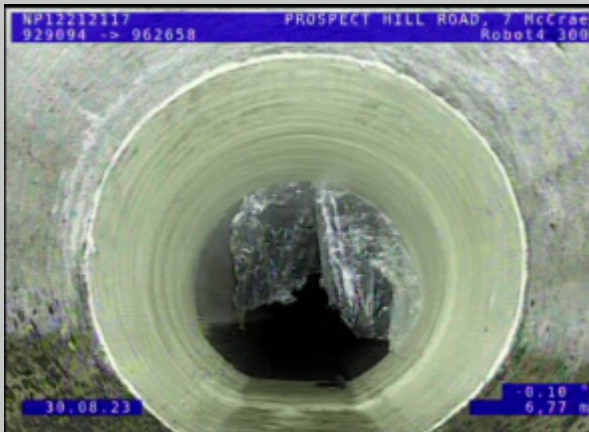
Water level, clear flow (the invert is visible), water level: 5%



Location of Observation: 0.45m Video Position: 00:00:17
 Observation Code: WLC
 Water level, clear flow (the invert is visible), water level: 5%



Location of Observation: 6.77m Video Position: 00:00:45
 Observation Code: RPL
 Point repair, localised lining--less than the complete inspection length, length: 600mm from 12 o'clock to 12 o'clock



Location of Observation: 6.77m Video Position: 00:00:45
 Observation Code: RPL[PHOTO 2]
 Point repair, localised lining--less than the complete inspection length, length: 600mm from 12 o'clock to 12 o'clock



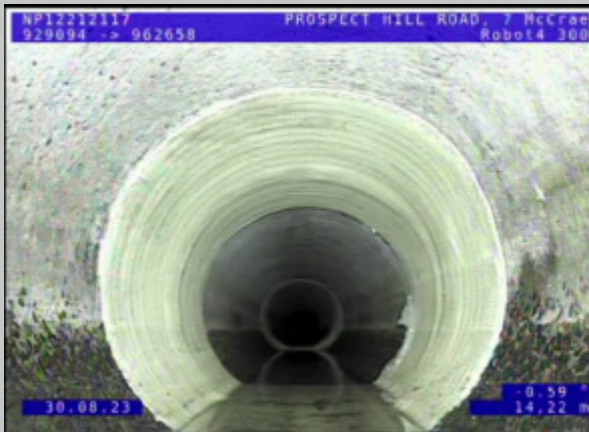
Location of Observation: 7.03m Video Position: 00:00:49
 Observation Code: RPL
 Point repair, localised lining--less than the complete inspection length, length: 600mm from 12 o'clock to 12 o'clock



Location of Observation: 7.03m Video Position: 00:00:49
 Observation Code: RPL[PHOTO 2]
 Point repair, localised lining--less than the complete inspection length, length: 600mm from 12 o'clock to 12 o'clock



Location of Observation: 14.22m Video Position: 00:01:47
 Observation Code: RPL
 Point repair, localised lining--less than the complete inspection length, length: 600mm from 12 o'clock to 12 o'clock



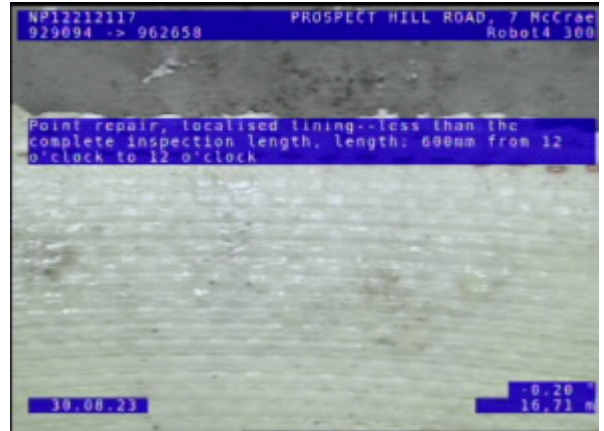
Location of Observation: 14.22m Video Position: 00:01:47
 Observation Code: RPL[PHOTO 2]
 Point repair, localised lining--less than the complete inspection length, length: 600mm from 12 o'clock to 12 o'clock



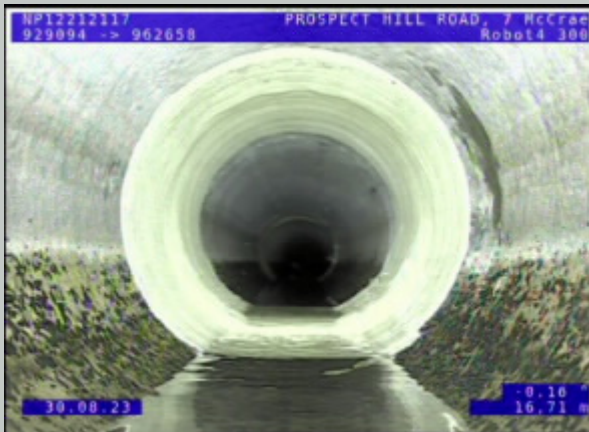
Location of Observation: 14.33m Video Position: 00:01:34
 Observation Code: RPL
 Point repair, localised lining--less than the complete inspection length, length: 600mm from 12 o'clock to 12 o'clock



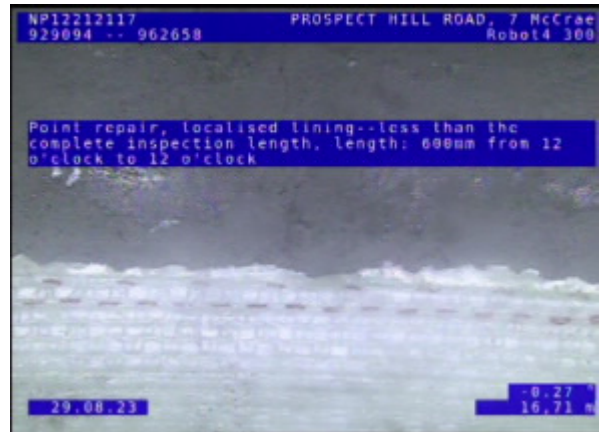
Location of Observation: 14.33m Video Position: 00:01:34
 Observation Code: RPL[PHOTO 2]
 Point repair, localised lining--less than the complete inspection length, length: 600mm from 12 o'clock to 12 o'clock



Location of Observation: 16.71m Video Position: 00:02:33
 Observation Code: RPL
 Point repair, localised lining--less than the complete inspection length, length: 600mm from 12 o'clock to 12 o'clock



Location of Observation: 16.71m Video Position: 00:02:33
 Observation Code: RPL[PHOTO 2]
 Point repair, localised lining--less than the complete inspection length, length: 600mm from 12 o'clock to 12 o'clock



Location of Observation: 16.71m Video Position: 00:02:05
 Observation Code: RPL
 Point repair, localised lining--less than the complete inspection length, length: 600mm from 12 o'clock to 12 o'clock



Location of Observation: 16.71m Video Position: 00:02:05
 Observation Code: RPL[PHOTO 2]
 Point repair, localised lining--less than the complete inspection length, length: 600mm from 12 o'clock to 12 o'clock



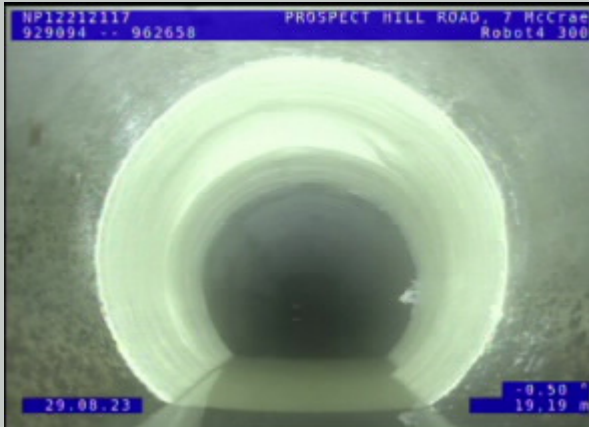
Location of Observation: 19.14m Video Position: 00:03:09
 Observation Code: RPL
 Point repair, localised lining--less than the complete inspection length, length: 600mm from 12 o'clock to 12 o'clock



Location of Observation: 19.14m Video Position: 00:03:09
 Observation Code: RPL[PHOTO 2]
 Point repair, localised lining--less than the complete inspection length, length: 600mm from 12 o'clock to 12 o'clock



Location of Observation: 19.19m Video Position: 00:02:36
 Observation Code: RPL
 Point repair, localised lining--less than the complete inspection length, length: 600mm from 12 o'clock to 12 o'clock



Location of Observation: 19.19m Video Position: 00:02:36
 Observation Code: RPL[PHOTO 2]
 Point repair, localised lining--less than the complete inspection length, length: 600mm from 12 o'clock to 12 o'clock



Location of Observation: 28.96m Video Position: 00:04:07
 Observation Code: RPL
 Point repair, localised lining--less than the complete inspection length, length: 600mm from 12 o'clock to 12 o'clock



Location of Observation: 28.96m Video Position: 00:04:07
 Observation Code: RPL[PHOTO 2]
 Point repair, localised lining--less than the complete inspection length, length: 600mm from 12 o'clock to 12 o'clock



Location of Observation: 29.07m Video Position: 00:03:35
 Observation Code: RPL
 Point repair, localised lining--less than the complete inspection length, length: 600mm from 12 o'clock to 12 o'clock



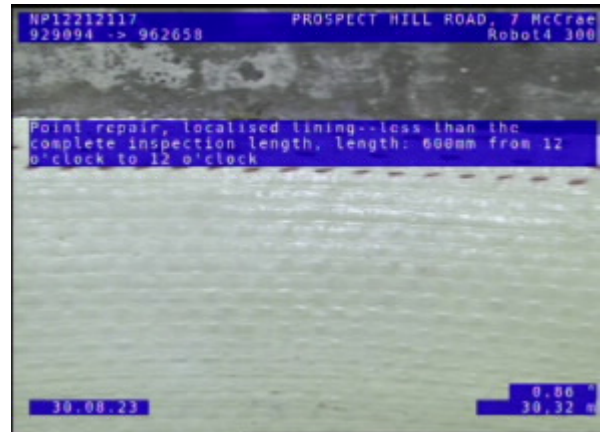
Location of Observation: 29.07m Video Position: 00:03:35
 Observation Code: RPL[PHOTO 2]
 Point repair, localised lining--less than the complete inspection length, length: 600mm from 12 o'clock to 12 o'clock



Location of Observation: 30.32m Video Position: 00:04:00
 Observation Code: RPL
 Point repair, localised lining--less than the complete inspection length, length: 600mm from 12 o'clock to 12 o'clock



Location of Observation: 30.32m Video Position: 00:04:00
 Observation Code: RPL[PHOTO 2]
 Point repair, localised lining--less than the complete inspection length, length: 600mm from 12 o'clock to 12 o'clock



Location of Observation: 30.32m Video Position: 00:04:43
 Observation Code: RPL
 Point repair, localised lining--less than the complete inspection length, length: 600mm from 12 o'clock to 12 o'clock



Location of Observation: 30.32m Video Position: 00:04:43
 Observation Code: RPL[PHOTO 2]
 Point repair, localised lining--less than the complete inspection length, length: 600mm from 12 o'clock to 12 o'clock



Location of Observation: 31.52m Video Position: 00:05:16
 Observation Code: RPL
 Point repair, localised lining--less than the complete inspection length, length: 600mm from 12 o'clock to 12 o'clock



Location of Observation: 31.52m Video Position: 00:05:16
 Observation Code: RPL[PHOTO 2]
 Point repair, localised lining--less than the complete inspection length, length: 600mm from 12 o'clock to 12 o'clock

No Photo

Photograph not taken by operator

Location of Observation: 31.55m Video Position: 00:04:22
 Observation Code: RPL
 Point repair, localised lining--less than the complete inspection length, length: 600mm from 12 o'clock to 12 o'clock

No Photo

Photograph not taken by operator

Location of Observation: 35.14m Video Position: 00:04:56

Observation Code: FHHH

Finish node, maintenance hole, Nodename:, 929094



Location of Observation: 35.33m Video Position: 00:05:59

Observation Code: FHHH

Finish node, maintenance hole, Nodename:, 929094