

Prepared for Mornington Peninsula Shire
 Asset ID NP12212055
 Location View Point Road, 1 McCrae
 Date 30/08/2023
 Operator Craig Hunt



Upstream Node 962658
 Downstream Node 964409
 Survey Direction Downstream
 Inspected Length 23.07 meters
 Camera Type Tractor
 Standard WSA 05-2008 2.2

Conduit Shape Circular
 Material PP
 Size 300



	Peak	Mean	Total	Average	Grade
Structural	0	0	0	0	1
Service	0	0	0	0	1

1

Structural Grade
 Sound physical condition, insignificant deterioration.

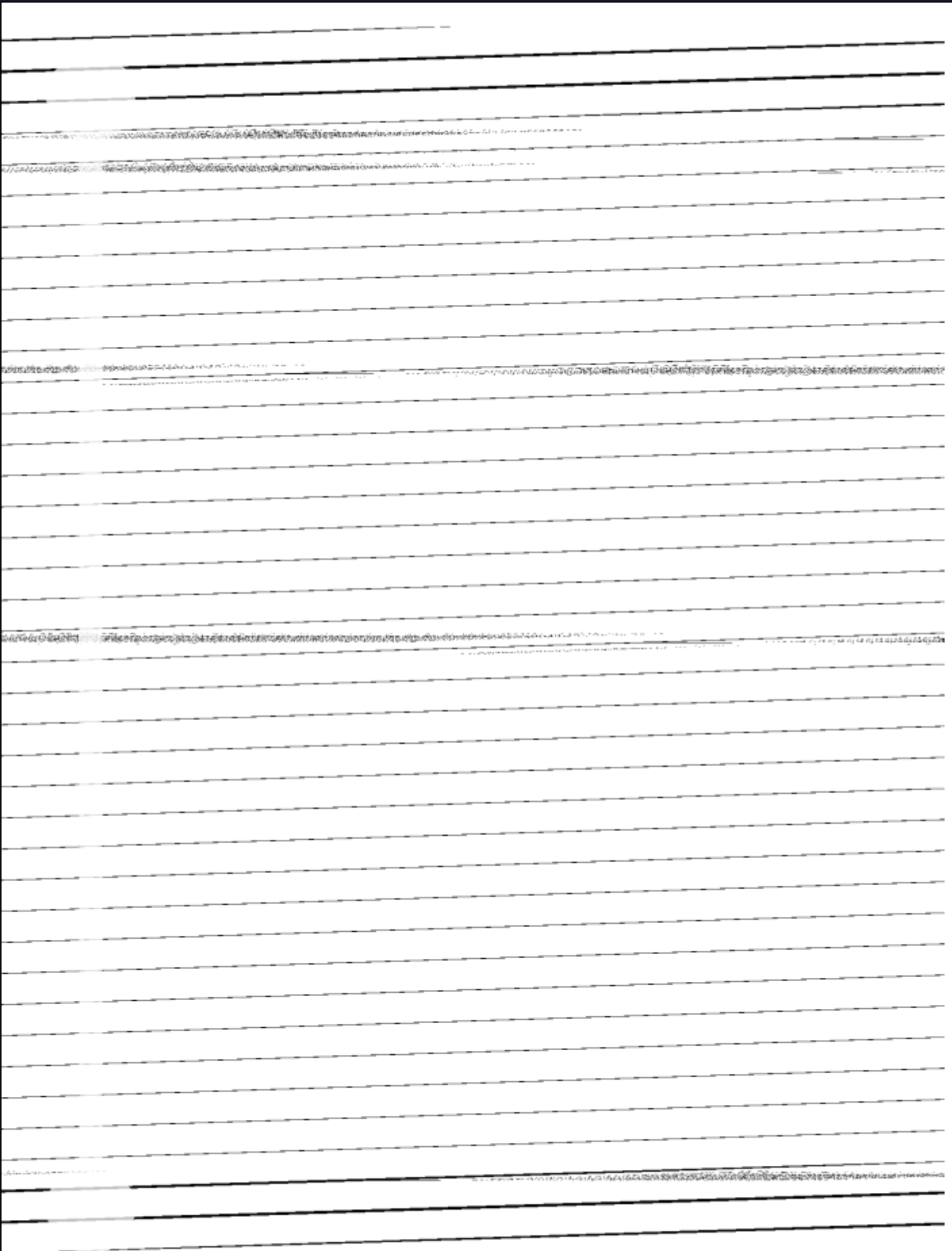
1

Service Grade
 Sound physical condition, insignificant deterioration.



Information in this report is intended as a guide only and represents the operators best judgement on the day of survey. Whilst all care has been taken to provide an accurate report, the asset owner is advised to review video footage and defect photographs rather than rely solely on calculated scores and conditions.

For further information regarding observations and scores please refer to the Water Services Association of Australia (WSAA) website (www.wsaa.asn.au)

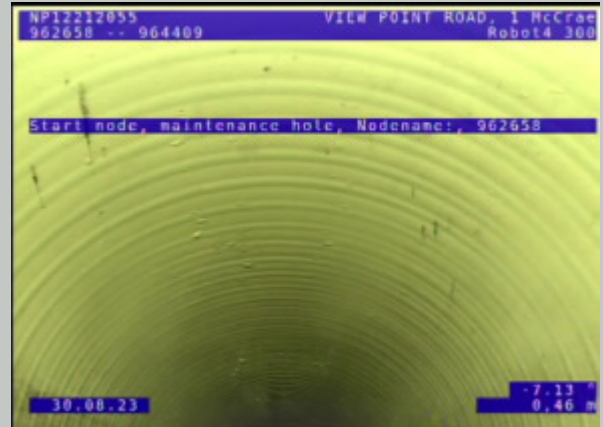




Location of Observation: 0.45m Video Position: 00:00:00

Observation Code: STMH

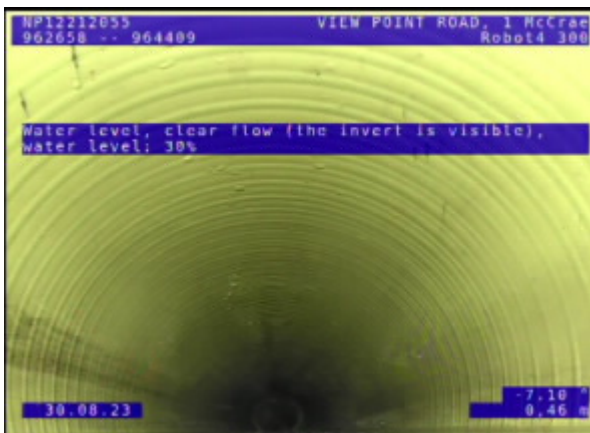
Start node, maintenance hole, Nodename:, 962658



Location of Observation: 0.45m Video Position: 00:00:00

Observation Code: STMH [PHOTO 2]

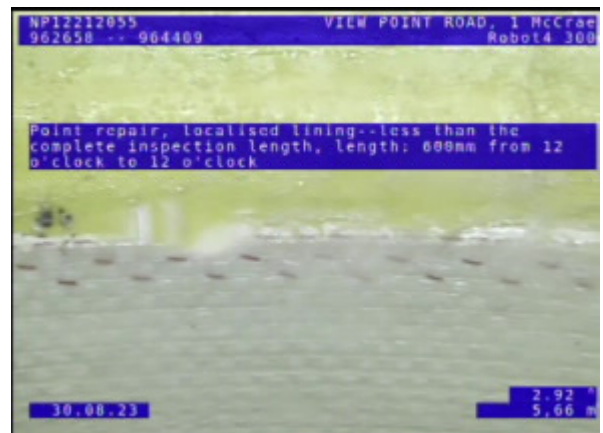
Start node, maintenance hole, Nodename:, 962658



Location of Observation: 0.46m Video Position: 00:00:15

Observation Code: WLC

Water level, clear flow (the invert is visible), water level: 30%



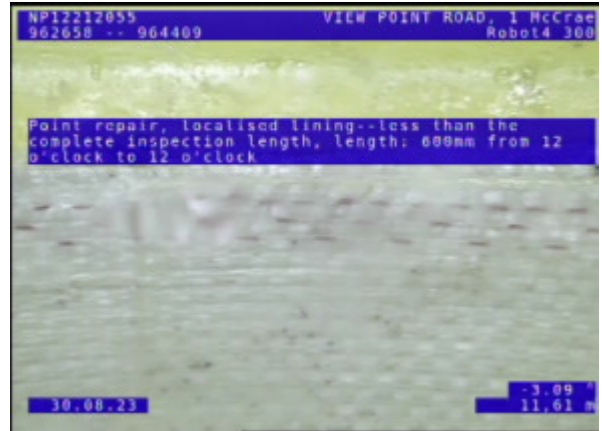
Location of Observation: 5.66m Video Position: 00:01:05

Observation Code: RPL

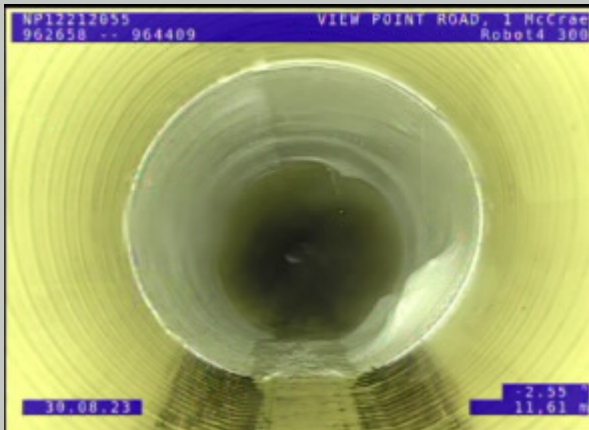
Point repair, localised lining--less than the complete inspection length, length: 600mm from 12 o'clock to 12 o'clock



Location of Observation: 5.66m Video Position: 00:01:05
 Observation Code: RPL[PHOTO 2]
 Point repair, localised lining--less than the complete inspection length, length: 600mm from 12 o'clock to 12 o'clock



Location of Observation: 11.61m Video Position: 00:01:52
 Observation Code: RPL
 Point repair, localised lining--less than the complete inspection length, length: 600mm from 12 o'clock to 12 o'clock



Location of Observation: 11.61m Video Position: 00:01:52
 Observation Code: RPL[PHOTO 2]
 Point repair, localised lining--less than the complete inspection length, length: 600mm from 12 o'clock to 12 o'clock



Location of Observation: 23.53m Video Position: 00:02:58
 Observation Code: FHHM
 Finish node, maintenance hole, Nodename:, 964409